

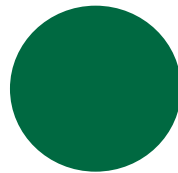


WHO Collaborating Centre
for Evidence-Based Health Promotion in Hospitals & HS
Bispebjerg University Hospital



Welcome to WHO Summer School 2009

HPH Network of Greece



International Network of
HHealth
PPromoting
HHospitals & Health Services

Quality Management and HP



WHO Collaborating Centre
for Evidence-Based Health Promotion in Hospitals & HS
Bispebjerg University Hospital



WHO-CC CPH would like to thank

The HPH Network of Greece for

- Making this WHO Summer School become a reality

The Teachers from

- Spain, Taiwan, Canada, Ireland and Denmark

The participants 2009



WHO Collaborating Centre
for Evidence-Based Health Promotion in Hospitals & HS
Bispebjerg University Hospital



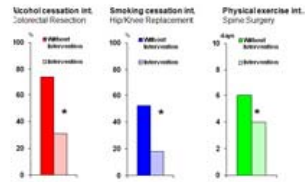
World Health Organization



Bispebjerg University Hospital

WHO Collaborating Centre

Research



Education



HPH



SCDB



P P P **Project**

A A A **Activity**



WHO: Terms of references

WHO-CC support countries to:

- Implement WHO principles for HP
- Use HP strategies and standards
- Create further evidence
- Teach and train staff in EB HP
- Implement best EB practice for HP



WHO Collaborating Centre
for Evidence-Based Health Promotion in Hospitals & HS
Bispebjerg University Hospital



Best Evidence-Based HP

Includes three parts

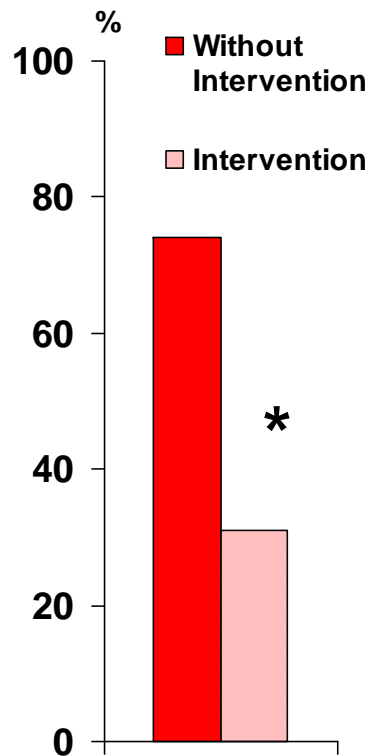


(Sackett, DL, Strauss SE, Richardson WS et al. Evidence-based medicine. Churchill Livingstone 2000)



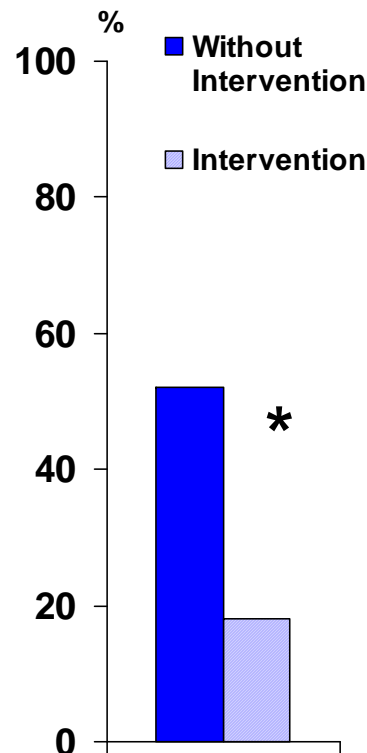
Adding HP to surgery

Alcohol cessation int.
Colorectal Resection



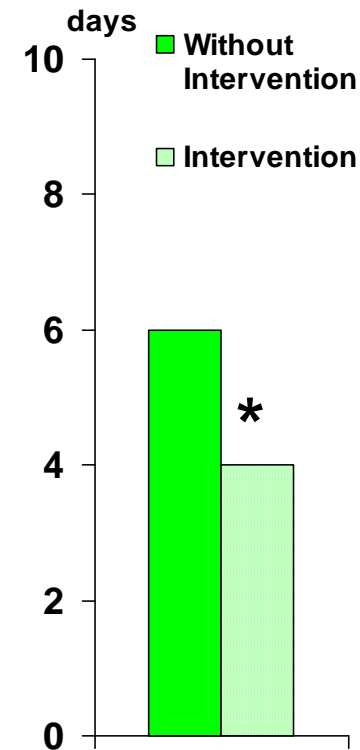
Postop complications
(*BMJ 1999*)

Smoking cessation int.
Hip/Knee Replacement



Postop complications
(*Lancet 2002*)

Physical exercise int.
Spine Surgery



Postop recovery
(*BMC Health Serv Res 2008*)



WHO Collaborating Centre
for Evidence-Based Health Promotion in Hospitals & HS
Bispebjerg University Hospital



Teaching & Training

- WHO Schools
- PhD Courses
- Physicians
- Diploma Nurses
- Pre-graduate Courses

- Evaluation Project



WHO Collaborating Centre
for Evidence-Based Health Promotion in Hospitals & HS
Bispebjerg University Hospital



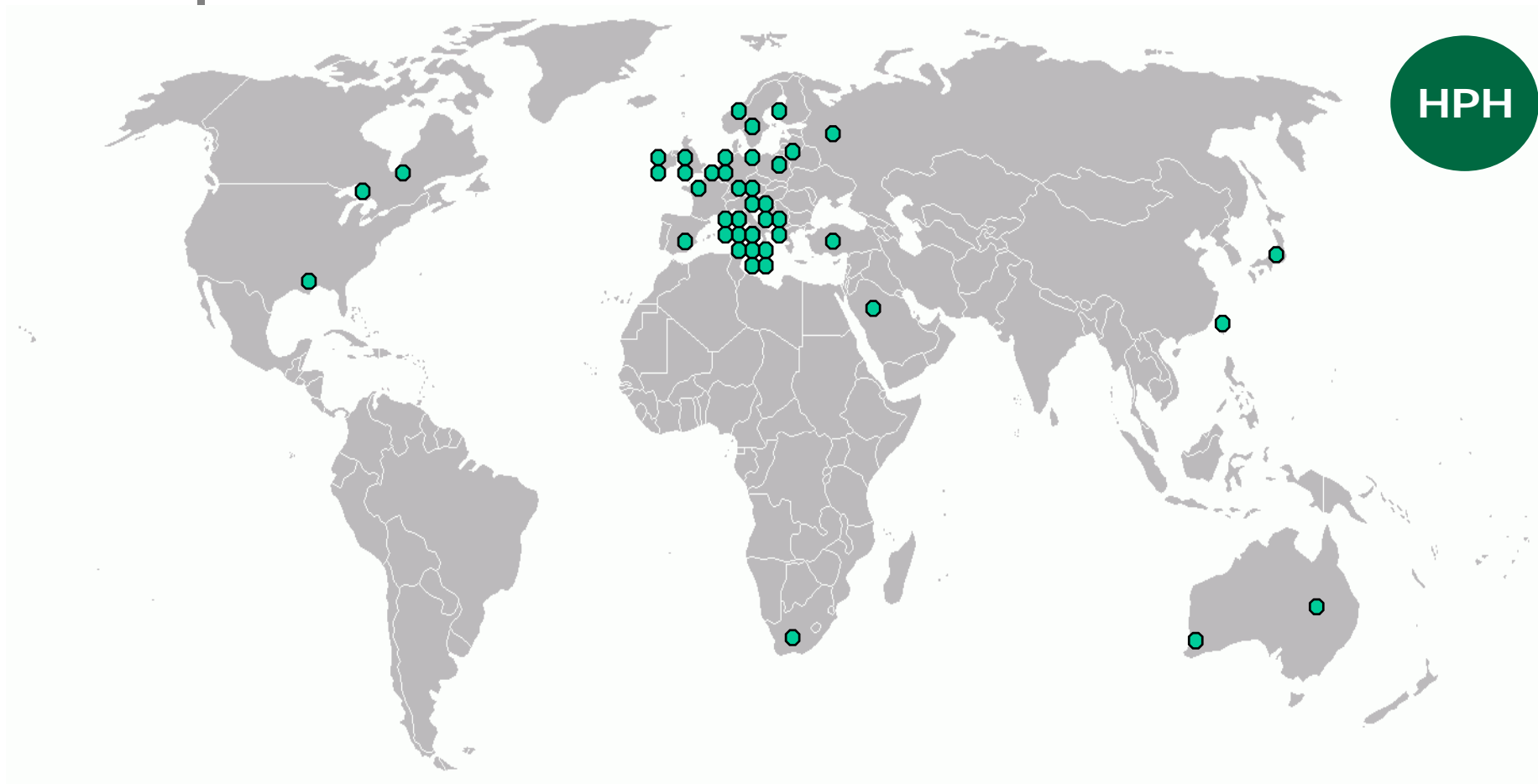
International Network for HPH & HS



A Network of N/R Networks

- Working together to **reorienting** H&HS towards better health gain by integrating HP in all aspects
- Established by WHO in 1995 and aimed at patients, staff and community

(Ottawa Charter 1986, and Vienna Rec. 1997)



National/Regional HPH Networks

Austria, Belgium, Bulgaria, Canada (Montreal & Toronto), China (Taiwan), Czech Republic, Estonia, Finland, France, Germany, **Greece**, Ireland, Northern Ireland, Italy, Lithuania, Norway, Poland, Russian Federation, Scotland, Slovakia, Spain (Catalonia), Sweden, Switzerland, USA (Pennsylvania)

Individual Hospitals/Health Services

Australia, Denmark, England, Japan, Saudi Arabia, Serbia, Slovenia, South Africa, Spain, Turkey, USA (Connecticut)

HPH in total

35 Networks

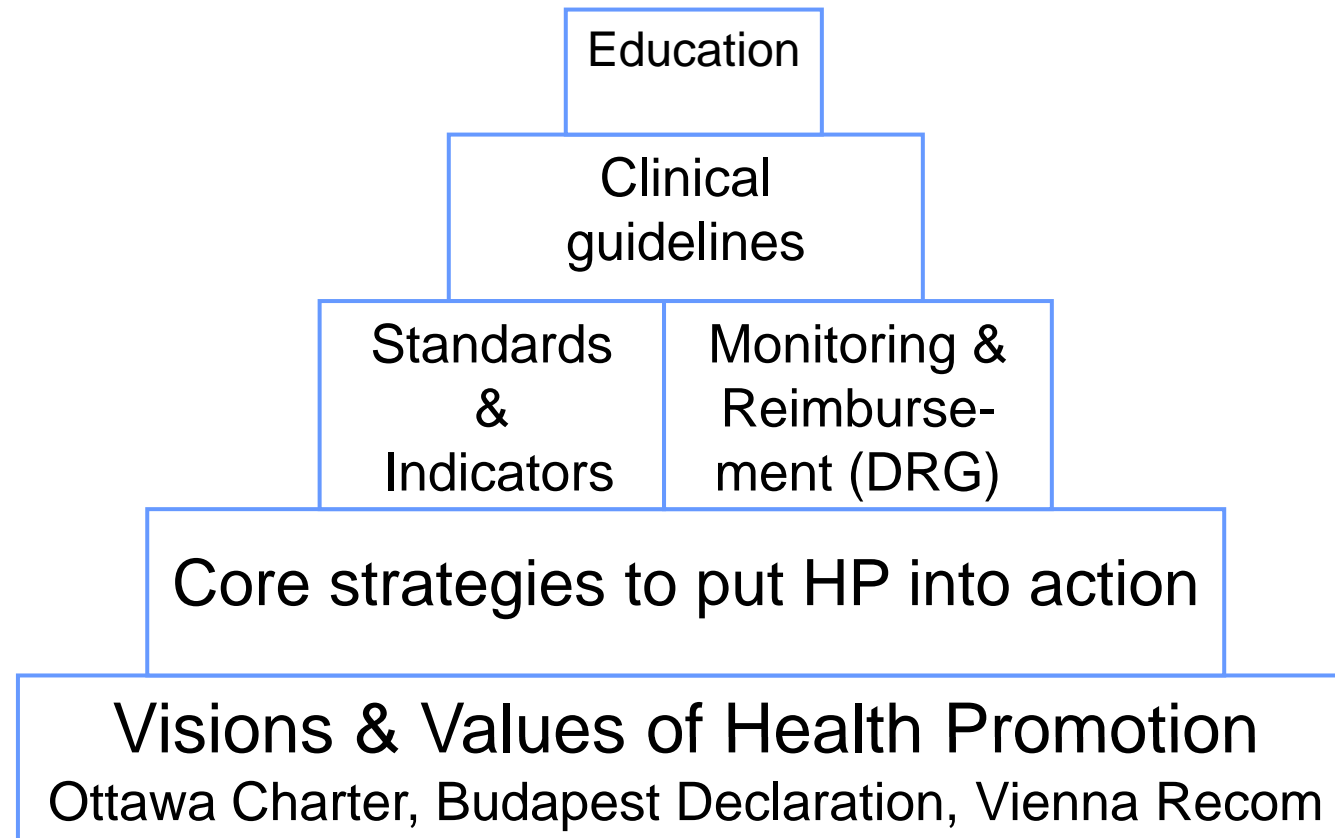
712 Hospitals/Health Services

38 Member States

(March 2009)



Pyramid of Implementation

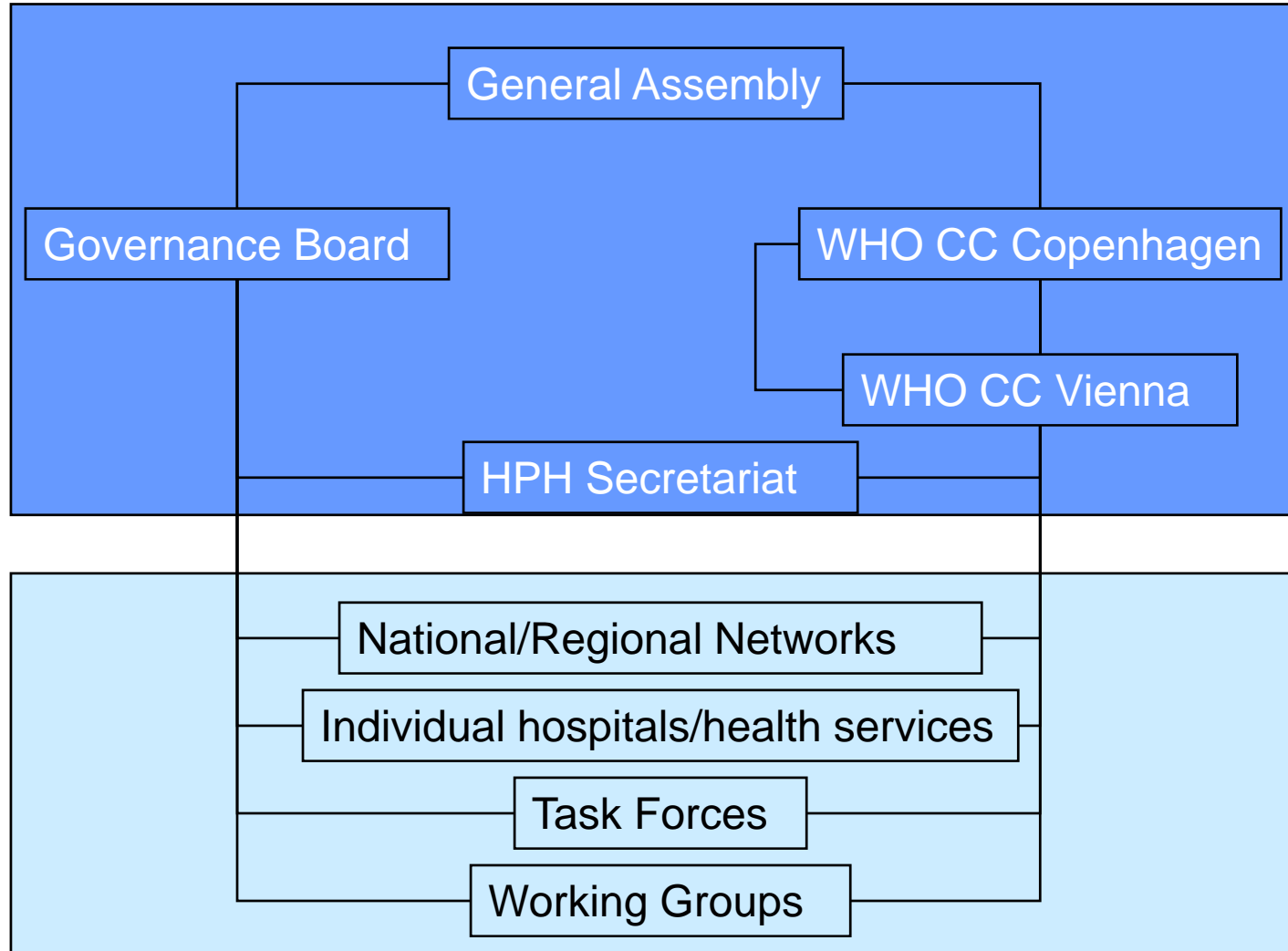




WHO Collaborating Centre
for Evidence-Based Health Promotion in Hospitals & HS
Bispebjerg University Hospital



Structure



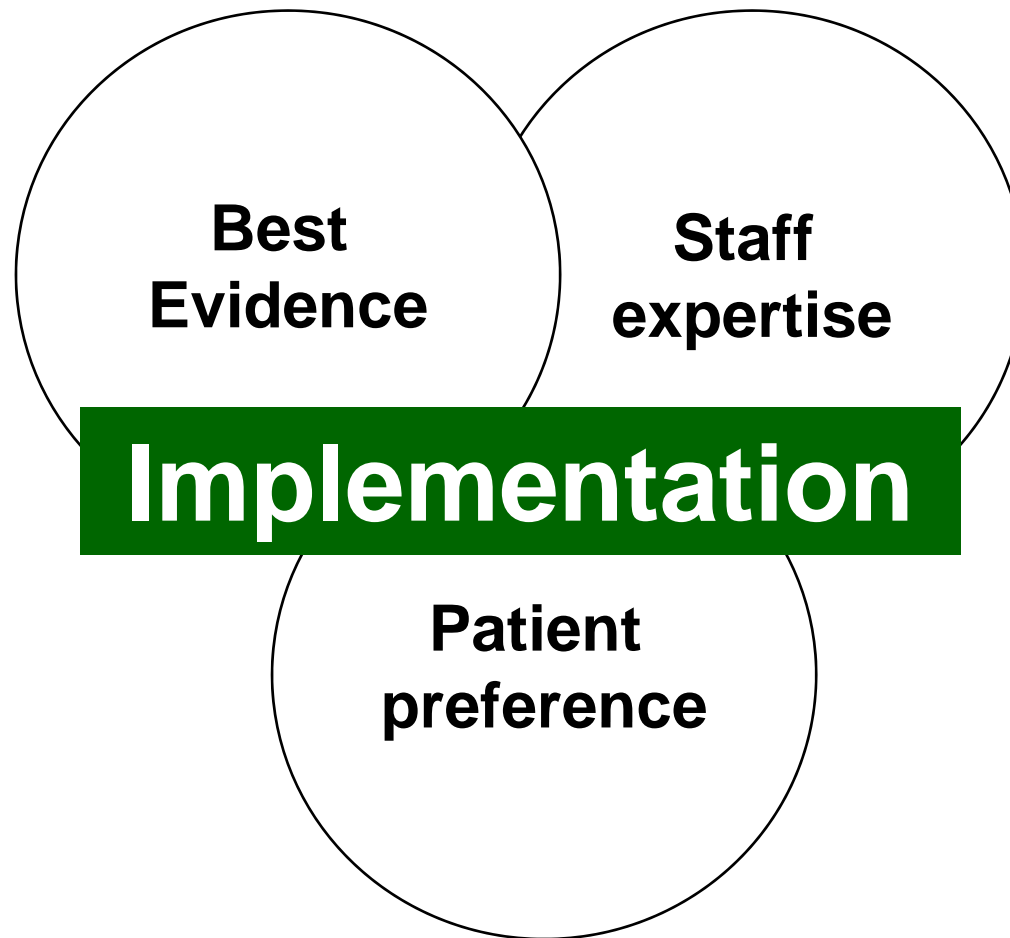


WHO Collaborating Centre
for Evidence-Based Health Promotion in Hospitals & HS
Bispebjerg University Hospital



Best Evidence-Based HP

Includes three parts



(Sackett, DL, Strauss SE, Richardson WS et al. Evidence-based medicine. Churchill Livingstone 2000)



Scope and purpose

The focus is to work with implementation of HP during quality management

- How to
 - Executing Strategies; Building organizational capabilities
 - Integrating HP in the reimbursement system
 - Documenting being a HP Hosp or HS
 - Establishing teaching and training
- Exchange knowledge and experiences
 - Examples from practice
 - Describe what you want to know and what you can pass on to others



The lecturers

- They are highly qualified health professionals and experts of
 - Implementation of Health Promotion in Hospitals & Health Services
 - Reimbursement
 - Quality Management
- They all contribute to the Summer School at no cost



WHO Collaborating Centre
for Evidence-Based Health Promotion in Hospitals & HS

Bispebjerg University Hospital



We hope that you will

- Take active part in the Summer School
- Become familiar with HPH Tools to support Implementation
 - reimbursement and quality management
- Become aware of your needs + competences
- Ask questions and discuss
- Make your own network within the School
- Spend a good time on Crete
- Give us inspiration for subjects, content and form for the upcoming Summer Schools
- Use your new knowledge at home



Program of today

Program

- Welcome
- Presentation of participants, relation to HPH work, expectations
- Executing strategies; building organizational capability

Lunch

- HPH Tools
- Integrating HP in the Reimbursement system (DRG)
- **Workshop**
- Plenary discussion

Teachers

- Tune Hein
- Jeff Svane
- Poul Erik Hansen
- Hanne Tønnesen



Program of Tuesday

- **Program**

- How to document being a HP Hospital or Health Service?
- HP Standards and Indicators
- **Workshop**
- Plenary discussion
- Experience with use of standards

Lunch

- Areas for exchange of knowledge and experience
- **Workshop**
- Plenary discussion

- **Teachers**

- Oliver Gröne, Spain
- SHU-Ti Chiou, Taiwan
- Ann O’Riordan
- Louis Côté